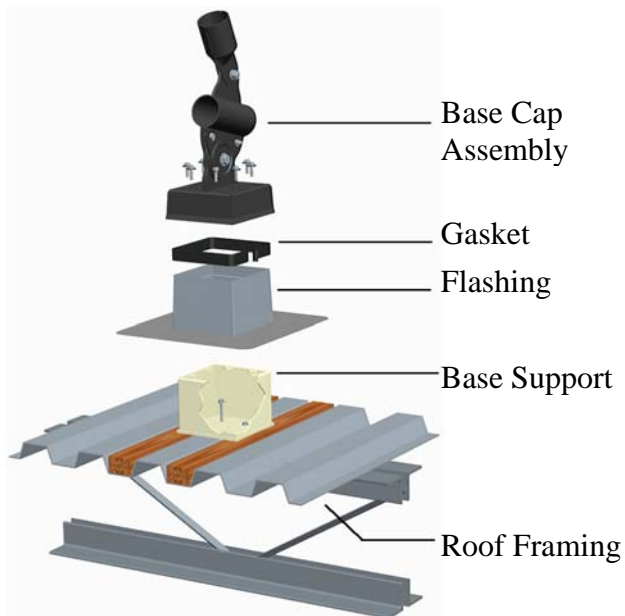
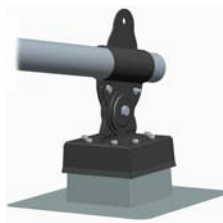




RoofScreen Mfg.
347 Coral Street
Santa Cruz, CA 95060

Phone: 866.766.3727
Fax: 866.253.0738
www.roofscreen.com



Roof Attachment Assembly

Description:

The Roof Attachment Assembly provides a watertight, structural mounting point for mounting a RoofScreen, solar array or any other type of rooftop equipment.

Components:

One Roof Attachment assembly includes:
1- Base Support (5", 9" or 12" tall), primer finish
1- Base Cap, steel, zinc plated & powder coated
1- Base Connector, zinc plated & powder coated
2- Formed Washers, zinc plated & powder coated

Hardware:

All the fasteners are Stainless Steel or hot dipped galvanized.

- 1- Special high torque bolt and nut
- 1- Torque load indicating washer
- 8- Self-sealing cap screws
- 2- Pinch bolt and nut

Base Gasket: (optional)

Self adhering EPDM foam rubber strip
Recommended for areas where ice & snow build up or splashing water is possible.

Flashing options:

All Stainless Steel:

Use when flange can be nailed down, or with peel & stick membrane over single ply roofing.

Stainless Flashing with lead base:

Use with BUR roofing over insulation or concrete when flange cannot be nailed down.

One-piece TPO formed boot:

Use with TPO membrane roofs. Check with us concerning roof manufacturer warranties.

Installation:

The Base Support is fastened directly to the structural members in the roof framing. The flashing is installed next, and roofed into the roofing system. The optional gasket is installed at the top of the flashing. Finally, the Base Cap Assembly is installed, extending 2.4" over the Base Support and flashing, compressing the gasket and creating a seal. 8 bolts with sealing washers fasten the cap to the Base Support.

LEED Information:

Structural Components/Steel
Post Consumer Recycled Content: 33%
Post Industrial Recycled Content: 0%
Manufactured: Campbell, CA